



CG280212CA

Gas cooktop 200 series
30", Natural gas 15 mbar
CG280212CA

Control panel for comfortable and secure operation
Mechanical power level regulation for 9 power levels, with exact setting and reproduction of flame size
Solid smooth-surface cast iron pan supports
Up to 12.5 kW on 5 burners

Cooking zones

1 multi-ring wok burner (300 W – 5000 W).
1 high output burner (600 W - 3000 W).
2 standard burners (420 W - 1750 W)
1 economy burner (290 W - 1000 W).

Handling

Control knobs with illuminated ring.
Integrated control panel.
One-handed operation.
Electric ignition.

Features

Three-part cast iron pan support with flat, continuous pot surface.

Safety

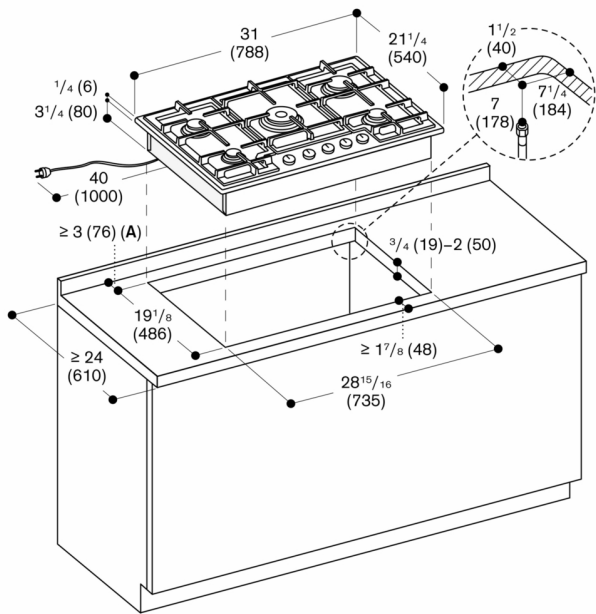
Thermoelectric safety pilot.
Residual heat indication.
Operation indicator.

Planning notes

The cooktop can only be surface-mounted.
Appliance can be snapped into the worktop from above.
Rear panel and wall trims must be heat-resistant and consist of a non-flammable material.
A minimum lateral clearance of at least 330 mm from adjacent heat-sensitive furniture or contact surfaces must be observed or thermal insulation fitted.
With a total connected load of more than 11 kW local regulations concerning room ventilation, room size and combination of extraction or recirculation hoods must be observed.
The minimum distance between the cooktop surface and a cabinet above, out of combustible material, needs to be 762 mm.
The minimum distance between the cooktop and the rear wall, out of combustible material, needs to be 76 mm.
The minimum distance to a ventilation above is shown at the planning hints for the individual ventilation product.
Appliance weight: approx. 19 kg.

Connection

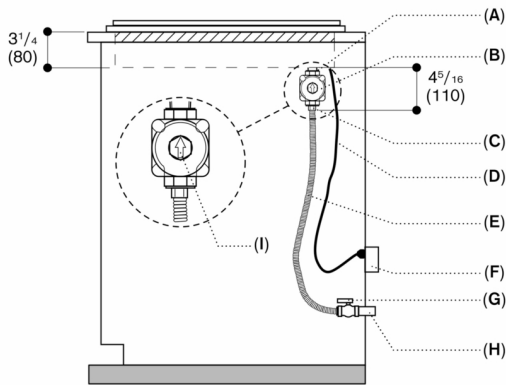
Total connected load gas 12.5 KW.
Total connected load electric 360 W.
120 V / 60 Hz.
Connecting cable 1.0 m with plug.



A: ≥ 4" (100 mm) for installation in a kitchen island

Measurements in inches (mm)

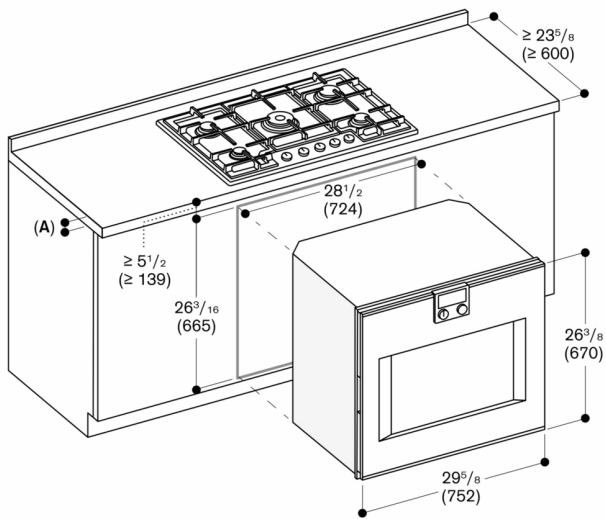
Side view – gas hob installation



- A: 3/8" (9.5 mm) NPT
- B: Gas regulator
- C: 1/2" (12.7 mm) NPT
- D: Power cable 4" (100 mm)
- E: Flexible gas line
- F: 120 V socket
- G: Gas cut-off valve
- H: Gas supply line stub-out
- I: Arrow on the pressure regulator shows the direction of gas flow

Measurements in inches (mm)

Gas hob CG280212CA with BO480613



A: Min. worktop thickness 3/4" (20 mm) for surface mounted installation

Measurements in inches (mm)